

## INSIDE

- ♦ Classroom News
- ♦ Community News
- ♦ Important Dates

**Reminder to all about the School times:**

**Students start at 9am and finish at 3:17pm.**

**If you are going to be early to school or are running late in the afternoon, please let staff at school know by email or phone call.**

**Also if anyone has any issues or problems please ring the school and make an appointment to see Kathy.**

**03 5020 6896**

# Clare Connection

## Kathy's Corner.....

Welcome back. We have been hit with the cold and flu plague which has a pattern of striking at the beginning of Term 2. Parent communication keeping us fully informed of absences has been appreciated.

Thank you to our families and staff who travelled to Balranald on ANZAC Day to participate in the ANZAC Day March. For those who were there to see the children march, and Annabelle and Jack perform their duties, I am sure you will agree they made us all very proud.

One of the areas of learning that we value is the Personal and Social Capability Framework. There is a common theme in this newsletter's activities supporting our children's social and emotional learning. The following pics show why I often think of Winnie the Pooh when I watch the kids together. An inspirational aspect of Winnie the Pooh is his emphasis on the importance of friendship and kindness. He values his friends above all else and is always willing to lend a helping hand or offer a listening ear to those in need. His compassion and empathy are a powerful reminder that we all have the ability to make a difference in the lives of others, no matter how small our actions may seem.

Edie was feeling weary on her first day back at school after being ill with a cold. Patrick chose to keep her company. I thought of Pooh and his friends.



Keep Smiling!

Kathy Bourke— Teaching Principal







# Lest we forget



Today, we were so proud of our Clare PS team. We participated in the Balranald ANZAC Day March and Service with all children showing pride and respect. Thanks to the parents and grandparents for their committed support. Lest we forget.





# Healthy Harold Life Education van Visit



Thanks to Healthy Harold and Markayla for travelling to Clare PS to support the children with their social emotional learning. The children explored how to recognise, regulate and self-manage emotions and behaviours in a variety of settings. The key areas of this learning focused on: how feelings, values and thoughts influence decision-making and the importance of respect and empathy in building and maintaining relationships.

Every child deserves to  
**thrive.**



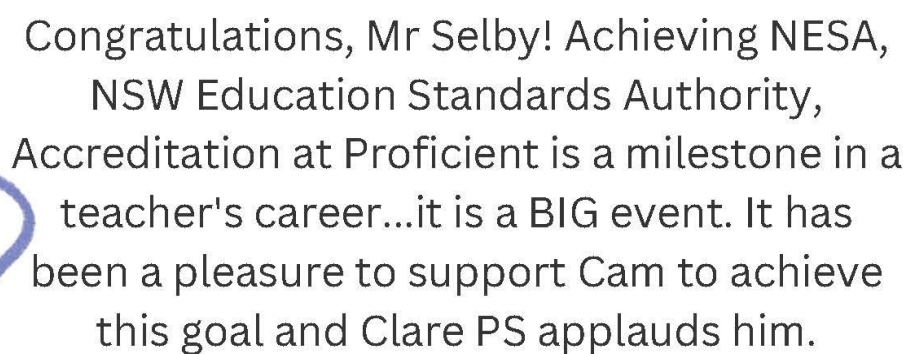


# Term 2 Assembly



**Happy  
Birthday  
Mr Selby**









## OUTDOOR LEARNING



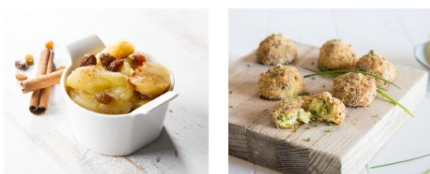
It was such a glorious day! We chose to make the most of our outdoor learning area. Such fun and learning was enjoyed by everyone.

One of the values and attitudes we hope to nurture in our children is: to demonstrate interest, enjoyment and confidence in the pursuit and application of mathematical knowledge, skills and understanding to solve everyday problems.

You may see kids on ipads, sitting in the sun, in a remote school ground. What we enjoyed was sharing the excitement and quest for knowledge as our gorgeous kids explored the world with google maps. They were sitting in Clare but they were roaming the streets of cities in France, Italy, America and Australia. Clare may be their position in the world now, but who knows where they may be in years to come.

### Nutrition Snippet

#### AUTUMN FRUIT AND VEG



#### Try these recipes

- [Stewed apples and sultanas](#)
- [Zucchini and cheese grancini](#)
- [Eggplant tagine](#)

For these recipes and more visit:

[healthylunchbox.com.au](https://healthylunchbox.com.au)



**Cancer Council**  
Healthy Lunch Box



### Cancer Council Healthy Lunch Box

Developed by dietitians, you can trust our website to help you with all things lunch boxes. Recipes and ideas are family-friendly, packed full of fruit, veggies and wholegrains and use only simple, budget-friendly ingredients.

<https://healthylunchbox.com.au>

### Nutrition Snippet

#### CHOCOLATE AND COCONUT BLISS BALLS



**Ingredients (makes 12)**  
**Time to make: 10 mins**

- 1 cup instant oats
- 12 pitted dates, chopped
- 1 cup desiccated coconut
- 2 tbsp cocoa
- ¼ cup raisins
- 2-5 tbsp warm water

#### Method

- 1) Place all ingredients except the water and 2 tablespoons of the desiccated coconut into a food processor.
- 2) Slowly add water starting with 2 tablespoons and process until smooth. Add more water if required.
- 3) Roll into balls and then roll each ball in the remaining coconut.
- 3) Place on a lined tray in the fridge for 1 hour to set.
- 4) Store in an airtight container in the fridge for up to 2 weeks or freeze for up to 2 months.

For this recipe and more visit:  
[healthylunchbox.com.au](https://healthylunchbox.com.au)



**Cancer Council**  
Healthy Lunch Box



# MOTHERS DAY CRAFT





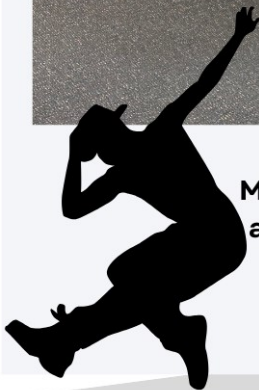


Winter is coming and our birds might need some tasty nourishment. The quest for the perfect home to attract our birds challenged the students.





**Thank you so much Justin, Freestyle Dance Ministry! Your willingness to travel to Clare PS, and have your own dance with the wildlife on the long stretch of road, was greatly appreciated. See you next year!**





# School Community Charter

 **Collaborative. Respectful. Communication.**

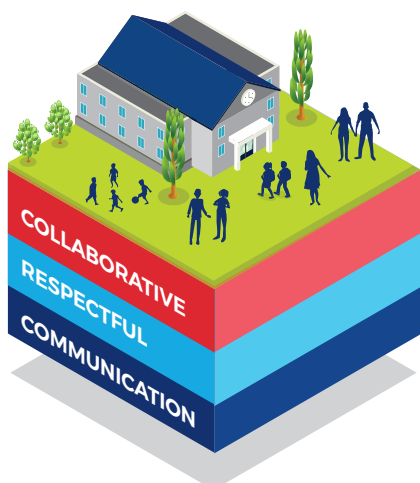
The following School Community Charter outlines the responsibilities of parents, carers, educators and school staff in NSW public schools to ensure our learning environments are collaborative, supportive and cohesive.

## What our schools provide

NSW public schools work to create positive environments for students, staff and the entire school community that support student learning. We strive to ensure that every student is known, valued and cared for.

**The best education happens when parents and schools work together.**

The School Community Charter aligns with the NSW Department of Education Strategic Plan 2018 – 2022.



## Positive environments

It is important that our NSW public schools are positive environments and that parents and carers are kept informed of students' progress and school announcements.

Parents and carers can expect:

- To be welcomed into our schools to work in partnership to promote student learning.
- Communication from school staff will be timely, polite and informative.
- Professional relationships with school staff are based on transparency, honesty and mutual respect.
- To be treated fairly. Tolerance and understanding are promoted as we respect diversity.

We treat each other with **respect**

We **prioritise** the wellbeing of all students and staff

**Unsafe behaviour** is not acceptable in our schools

We work **together** with the school

**Ensuring respectful learning environments for all members of NSW Public Schools communities.**





We create  
**collaborative**  
learning  
environments

We  
all play  
**our part**

We work  
**in partnership**  
to promote  
student  
learning

## Communicating with our schools

Our staff will find a time to talk to you when they can give you their full attention. Please remember that while our staff are in class or dealing with other matters, they may not be available to answer your questions immediately.

Our schools and communities will make sure that written communication is appropriate, fair and easy to read. We encourage you to use email and social media appropriately to connect with your school and stay up-to-date with up-coming events in the school community.

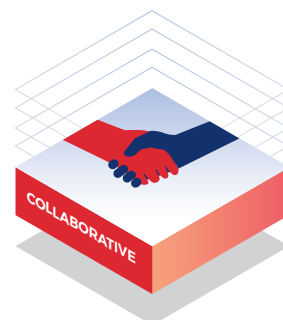
Our guide for parents, carers and students provides useful information about the complaints process:

[education.nsw.gov.au/about-us/rights-and-accountability/complaints-compliments-and-suggestions/guide-for-parents-carers-and-students](https://education.nsw.gov.au/about-us/rights-and-accountability/complaints-compliments-and-suggestions/guide-for-parents-carers-and-students)

## Respectful communication is a right

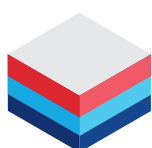
In all workplaces people have the right to feel respected. Unacceptable and offensive behaviour has no place in our school communities.

To ensure the wellbeing of students, staff and the community in our schools, steps will be taken to address unacceptable behaviour. This may include restricting contact with the school community or, in more serious cases, referral to NSW Police.



### Unacceptable behaviour may include but is not limited to:

- Aggressive or intimidating actions, such as violence, threatening gestures or physical proximity.
- Aggressive or intimidating language, including the use of obscenities, making sexist, racist or derogatory comments or using a rude tone.
- Treating members of the school community differently due to aspects such as their religion or disability.
- Inappropriate and time wasting communication.



**Collaborative.**  
**Respectful.**  
**Communication.**

**School Community Charter**

education.nsw.gov.au





# Free POWERHOUSE Astronomy talks

SAVE YOUR SPOT BY  
SCANNING QR CODE



**WITH SARAH REEVES**

Join astronomer and Powerhouse Curator Sarah Reeves for a 45-minute tour of the exhibition Southern Sky Astrophotography: 2022 David Malin

Awards. Discover the beauty of the night sky and learn more about astronomy. With her deep knowledge of astronomy, Sarah will highlight the breathtaking beauty of the night sky and impart the science behind the images on display.

Followed by an evening under the stars as you discover and learn more about the night sky with astronomer and Powerhouse Curator Sarah Reeves. In this 45-minute tour of the heavens, travel through the Solar System, out into the Milky Way and beyond, marvelling at the planets, stars, constellations and galaxies above us.

Bring a picnic blanket to lie on with food being provided for as you travel with Sarah.

**Location** BALRANALD ROYAL THEATRE  
**Start Time** 5PM, 25 MAY 2023  
**Address** 70 MARKET ST, BALRANALD







25th May 2023	Small Schools Cross Country Buronga
2nd June 2023	RDO
12th June 2023	King's Birthday Holiday/no school
16th June 2023	RDO
29th June 2023	PBL– Pyjama Day
30th June 2023	RDO/last day of term 1
17th July 2023	Staff Development Day
18th July 2023	First Day of Term 3 for Students

