

INSIDE

- ◆ Classroom News
- ◆ Community News
- ◆ Important Dates

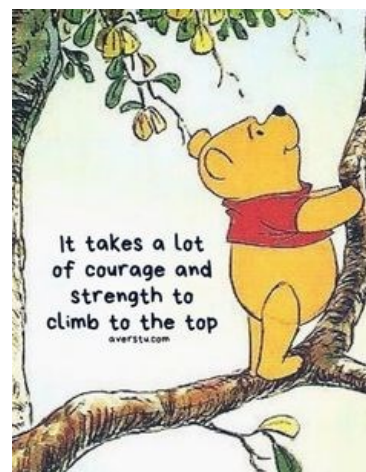
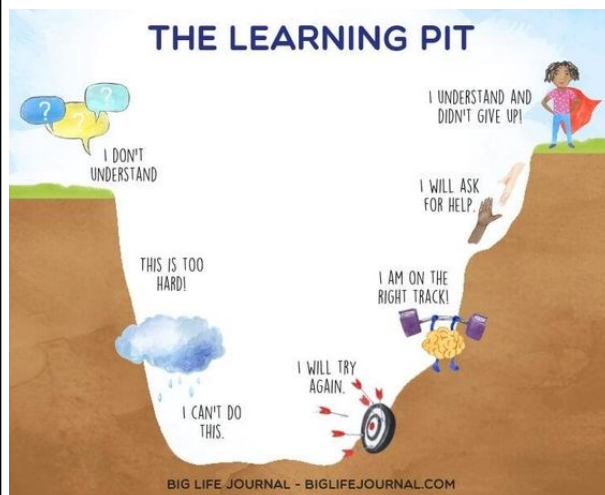
Clare Connection

From the Principal's Desk.....

Welcome back to the final term for 2022. Our first few weeks have seen our topsy turvy year continue. Student and staff absences due to the weather, illnesses and a family holiday may have continued to cause disruptions but our focus has remained centred on our children's learning and wellbeing. Their needs are our constant 'why' and are behind every move we make.

Sometimes a child's exuberance can catch us all by surprise bringing smiles. Term 4, day 1 Michael Pippin bounced in the door. As we were all having a 'how were your holidays chat', Michael announced that he would like to do a comprehension. He added that he hadn't done one for two weeks and so could he start the day with one, please? A child's attitude plays an enormous role in their learning growth and with an attitude like that, Michael is a role model for us all.

Learning is a process and at times children may fall into the pit. It is their attitude that will help each child tackle their learning pit. Our continued focus on growth mindset reminds all children to think like Winnie and make the climb. We have enjoyed a great year of learning so please, support your children to keep climbing for just a little longer.



Thanks to Jo Griffiths for volunteering to support the children with their tennis skills. They are having a ball!
If any community member would like to support the children's learning in 2023 please let us know. Do you have a skill or hobby to share? Or would you prefer to curl up and listen to a child read? We are open to your suggestions and would love community involvement in the life of Clare PS.

Keep Smiling!
Kathy Bourke— Teaching Principal

SEAN CHOOLBURRA

Maari Ma Health Balranald were excited to bring Sean Choolburra and his vibrant performances to Balranald Central School.

Sean performed for both primary and secondary students in two captivating sessions. We were thrilled that St Joseph's Balranald, Euston Public School and Clare Public School could bring their primary students in to BCS for the day.

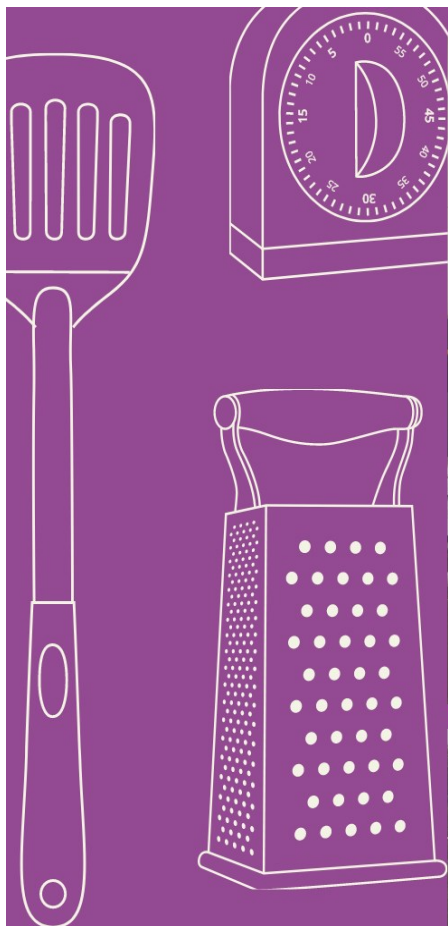
We hope you all enjoyed today!

Thanks BCS for hosting this event and thanks Sean for a fun day.



PAINTING the buddy benches

TRANSFORMING OUR OLD BENCHES INTO WARM AND COLOURFUL BUDDY BENCHES.



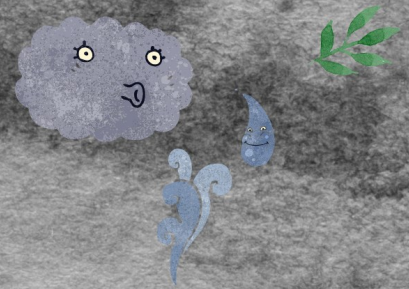
Our new kitchen is, finally, live and operational!





Ecosystems

At the beginning of this term the children enjoyed a visit from Vanessa Anderson, Local Landcare Coordinator —Western Division. Vanessa shared her 'ecosystems' quilt and gave us positive feedback on our native bee garden we began in term 3. Thank you, Vanessa.



Why we love our grandparents...when the heavens opened trapping kids from getting to school in week 1, grandparents stepped in to save the day in week 2. Jack, Edie and Hannah were not missing another day so they had a sleep over at their special place and Pa and his trusty mate ferried them safely to school. Thanks to Jo and Mark Griffiths and Ewan and Barb Waugh.



Jack Celebrated his birthday at school with some cake at the start of the term.



Our Happy Numeracy Learners

The following excerpt is taken from the DOE Student Wellbeing site: Positive classroom environments are ones in which students experience a sense of belonging and feel safe asking questions and taking risks with their learning. They are emotionally and physically safe and engaging spaces.

We use evidenced based practices in everything we do. These pics form our maths lessons show how effectively we achieve happy learners.

During numeracy we aim to develop a positive mindset towards mathematics and encourage every student to work mathematically – developing fluency, understanding, problem-solving, reasoning and communication skills.





NSW Department of Education

Bushfire Danger Period Information for Parents and Carers

This brochure provides information for parents and carers about arrangements for the bushfire danger period.

The NSW Department of Education has engaged external experts to conduct assessments of all NSW government schools to identify schools at greater risk of impact from bushfires.

To support the health, safety and wellbeing of students and staff in your school, the department in consultation with NSW Rural Fire Service, will direct the school to temporarily cease operations on days when a Catastrophic Fire Danger Rating has been declared for your school's NSW Fire Area. Alternative learning arrangements will be put in place for these days.

In addition, schools may be made non-operational due to changing higher risk conditions and relevant advice from emergency services.



What is a Fire Danger Rating?

Fire Danger Ratings describe the potential level of danger should a fire start. The ratings are determined by a combination of factors including air temperature, relative humidity, wind speed and drought. The new Australian Fire Danger Rating System has four ratings; Moderate, High, Extreme and Catastrophic.

For further information on the Australian Fire Danger Rating System, visit - www.rfs.nsw.gov.au/news-and-media/fire-danger-ratings-are-changing-soon

Old Fire Danger Rating sign



New Fire Danger Rating sign





When will I know if my child's school has been made non-operational?

At approximately 4:00 pm each day the Fire Danger Rating is issued for the following day. This means that schools, including onsite preschools, will be notified after school hours that it will be non-operational the following day. Your school will notify you as soon as possible by the preferred method of communication.

Parents and carers are requested to:

- Provide up-to-date home and after-hours contact details to your school.
- Stay up-to-date with news and local media a through the bushfire danger period.



NSW School Updates app

Get the free NSW School Updates app to receive operational status updates for NSW public schools – education.nsw.gov.au/parents-and-carers/nsw-school-updates-app



What education arrangements will be in place if the school is non-operational?

When non-operational, your school will advise of alternative learning arrangements, including any relocation or learning from home plans.



Learn more

Be prepared and make sure you have your Bushfire Survival Plan in place. The NSW Rural Fire Service has resources for all residents to plan and prepare for the bushfire season. Consider whether your home is safe from bushfires and grassfires and be prepared to relocate to a safer place well in advance.

Find more information and resources on NSW Rural Fire Service – rfs.nsw.gov.au/plan-and-prepare

We appreciate your cooperation during the bushfire season. For further information about Fire Danger Ratings and the bushfire danger period, please refer to – **NSW Rural Fire Service – rfs.nsw.gov.au**

The department's School Safety website education.nsw.gov.au/public-schools/school-safety provides up to date information during bushfires and grassfire emergencies.

Please contact your school with any additional questions you may have.



NSW Department of Education

FACT_023_V3Aug2022

2

COVID-smart measures for schools

Information for parents, carers and students



We know that being together in the classroom is the best thing for our students' learning, growth and welfare. This term we will continue to implement several measures to allow us to prioritise both the wellbeing of our students and a consistent and productive learning environment.



Stay home if unwell

- If your child is unwell, you must keep them at home. If they are displaying COVID-19 symptoms, they should take a COVID-19 test (PCR or RAT) and follow the advice from the NSW Government on [managing COVID-19 safely at home](#).
- Your child should only return to school when they are symptom free.



Vaccinations

- Vaccinations for COVID-19 and other viral illnesses are one of the best ways of protecting yourself, your family and the community. Vaccination is a safe and effective way to give your immune system a helping hand against many illnesses.
- All eligible students and staff are strongly encouraged to keep up to date with their vaccinations to protect their health.
- All staff working in schools for specific purposes (SSPs) are required to be double vaccinated against COVID-19 or hold a valid medical contraindication.



Rapid antigen testing

- Rapid antigen tests (RATs) should be used if your child is displaying COVID-19 symptoms.
- Students who test positive to COVID-19 are encouraged to notify their school and register their positive test results with [Service NSW](#) to have access to timely advice and support from NSW Health.
- Schools will maintain a reserve stock of rapid antigen tests onsite for surveillance testing purposes in the event of an outbreak.



Hygiene and cleaning

- Students are encouraged to regularly wash their hands with soap and warm water, and to use personal protective equipment as required.
- Boosted day cleaning of schools will continue on high-touch areas and other hard surfaces, door handles, lockers, light switches and handrails in stairways.



Ventilation

- Fresh air is the most effective form of ventilation to minimise the risk of transmission.
- During the warmer months, cooling will be used together with ventilation methods to balance thermal comfort.
- All learning spaces in government schools have been checked to ensure appropriate levels of ventilation and air purifiers have been provided where needed.
- Using outdoor spaces will continue to be encouraged where possible.



Masks

- Mask-wearing is strongly encouraged where possible for all students, staff and visitors, particularly indoors and/or when physical distancing is not possible, and if they have been exposed to COVID-19.
- Mask-wearing is required at all times for staff, volunteers and other workers who support our students who are at greater risk of serious illness should they contract COVID-19, whether they be in schools for specific purposes (SSPs), support units or mainstream classrooms.



Visitors

- Visitors can attend school sites regardless of their vaccination status.
- Visitors who are engaging directly with students in certain higher-risk settings for school operations and curriculum delivery and allied health partners for the wellbeing of students, may be required to wear masks.



Activities

- Health and safety risk assessments will be integrated when planning activities, including excursions and overnight camps.
- Parents and carers will be made aware of the risk of exposure and will need to give permission for certain activities.



Responding to local situations

- Schools will work with the department's Health, Safety and Staff Wellbeing case management team to respond appropriately to local situations, including outbreaks of viral illness.
- In some cases, schools may temporarily introduce additional measures as a 'circuit breaker', including requiring mask-wearing, postponing or limiting non-essential activities and directing cohorts to learn remotely.



Learning remotely

- Schools continue to have access to digital, guided and printed learning resources to support students who need to learn remotely.

For more info, visit education.nsw.gov.au/covid-19/advice-for-families

Telephone interpreter service

If you need further information please call your school principal. If you need an interpreter to assist you with your enquiry please call the Telephone Interpreter Service on 131 450 and ask for an interpreter in your language. Tell the operator the phone number you want to call, and the operator will get an interpreter on the line to assist you with the conversation. You will not be charged for this service.

The NSW Government is committed to ensuring school operations continue while prioritising the safety and wellbeing of students and school staff.



Australian Government

National Emergency Management Agency

COMMUNITY SUPPORT SKILLS

FREE WORKSHOP



10AM - 3PM
CLARE HALL
SAT 12 NOVEMBER
LUNCH SPONSORED BY

TRONOX

CONTENT

- health and mental health
- stress and its impact
- signs someone may be struggling with their mental well-being
- having difficult conversations
- finding and providing help for someone struggling
- perspective on your own well-being
- strategies for self-care



**LEARN HOW TO
HELP OTHERS IN
YOUR
COMMUNITY**



**DEVELOP YOUR
SKILLS,
KNOWLEDGE
AND
CONFIDENCE**



**HELP BUILD A
STRONGER
COMMUNITY**

This workshop is delivered by
Marie Kelly RAMHP Coordinator
for Far West NSW

RSVP ESSENTIAL



0429 674 307 or 0427 563 876



marie.kelly1@health.nsw.gov.au
claire.butler@nema.gov.au

**[SOCIAL FUTURES**

Delivering the NDIS in your community

**We are coming
to South Western
NSW**

NDIS Information Desks across South Western NSW

Social Futures delivers NDIS Local Area Coordination services across Western and Far West NSW.

We will be available at the following locations:

You can drop in at Clare Public School on 29th November between 2-4pm or call 1800 522 679 to make an appointment with a Local Area Coordinator.

- Do you need support because of a disability?
- Are you or a family member thinking about applying for the NDIS?
- Need help to understand your NDIS plan?

Local Area Coordinator next here:

Cassandra Holden

Here to support you. Contact us:

- Call our dedicated participant hotline on 1800 522 679.
- Send us an email at lac@socialfutures.org.au
- Visit our office 181 Thomas Street, Broken Hill 2880 8.30am - 4.30pm



We acknowledge the Traditional Custodians of the land where we live and work and their continuing connection to land, water, sea and community. We pay respects to Australia's First Peoples, to their unique and diverse cultures, and to Elders past, present and future.

Inclusion is about the actions we take every day. We welcome, support, and celebrate diversity.



11 November 2022	Kinder Transition Day Colour Run @ Clare PS
18 November 2022	Rostered Day Off
25 November 2022	Last Kinder Transition Day
29 November 2022	NDIS connection Desk 2-4 pm at Clare PS
2 December 2022	Rostered Day Off
14 December 2022	Presentation Day
15 December 2022	Students Last Day Term 4
16 December 2022	Rostered Day Off
19 December 2022	Staff Development Day
20 December 2022	Staff Development Day

Changes to self-isolation rules

It is no longer mandatory to self-isolate at home if you [test positive for COVID-19](#).

NSW Health strongly recommends people who are sick or have tested positive to COVID-19 stay home until their symptoms have gone.

Some restrictions will still apply for high-risk settings such as healthcare and aged care facilities.

How can you stop coronaviruses spreading?

If you need to cough or sneeze



Catch it with a tissue



Bin it



Kill it by washing your hands with soap & water or hand sanitiser

You should wash hands with soap & water or hand sanitiser



After breaks & sport activities



Before cooking & eating



SCHOOL ETC.
On arrival at any childcare or educational setting



After using the toilet



Before leaving home



Try not to touch your eyes, nose, and mouth with unwashed hands



Do not share items that come into contact with your mouth such as cups & bottles



If unwell do not share items such as bedding, dishes, pencils & towels